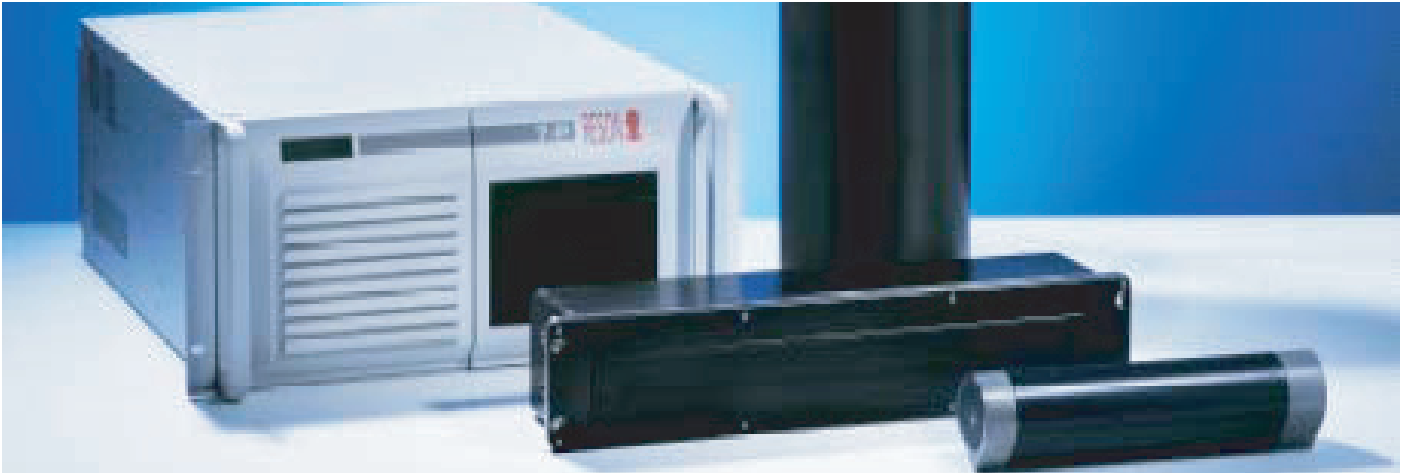




SeaBat 7125

HIGH-RESOLUTION MULTIBEAM ECHOSOUNDER SYSTEM



SeaBat 7125

- Unparalleled Resolution and Installation Flexibility
- 400kHz - 256 beams
- Enhanced beamforming option with 512 beams at 400kHz
- 0.5° Centre Beam Width at 400kHz
- 128° Swath Coverage
- 400m Depth Rated (6000m option)
- Beam Data Recording & High Speed Export Option

The new generation SeaBat 7125 represents yet another technological breakthrough in high quality performance. With unparalleled resolution and installation flexibility, the SeaBat 7125 is ideal for a great variety of hydrographic, offshore, military, bathymetric and imaging applications from a surface vessel or ROV to 6000m depth.

The SeaBat 7125 is a single frequency (400kHz) multibeam echosounder. The receiver covers a 128° swath, with ultra high resolution and a typical range of 300m. The SeaBat 7125 is controlled by the 7-P, a high performance Sonar Processor that manages data flow and signal processing using a state-of-the-art FPGA architecture. The 7-P provides a Windows®-based GUI user interface, allowing system configuration, control, data output, storage and built-in test environment (BITE) displays to assist the operator.

Optional equi-distant or equi-angular beam spacing across the entire swath is selectable by the operator to provide uniform sounding density and maximize usable outer swath. Data logging of beamformed water column data or pre-beamformed stave data to an external RAID disk system is also optionally provided. The SeaBat 7125 receiver sonar head design provides increased bandwidth, improved dynamic range and noise immunity over earlier models and makes full use of Commercial-off-the-Shelf (COTS) hardware and software to increase cost effectiveness with a well defined path for future upgrades and expansion.

Future Optional Upgrades Include:

- Full Calibration & Element Data Recording
- 7128 Forward - Looking Sonar
- AUV Version with Internal Data Storage





SeaBat 7125

HIGH-RESOLUTION MULTIBEAM ECHOSOUNDER SYSTEM

SYSTEM PERFORMANCE

Frequency:	400kHz
Est. Range:	300m
Swath Width:	128°
Number of Beams:	256/512 (optional)
Beamwidth (H x V):	0.5° x 1°
Max Update Rate:	50Hz
Waveform:	Gated CW
Depth Resolution:	3mm
Pulse Length:	10 to 300 µseconds
Depth Rating:	400m (standard) 6000m (option)

INTERFACE

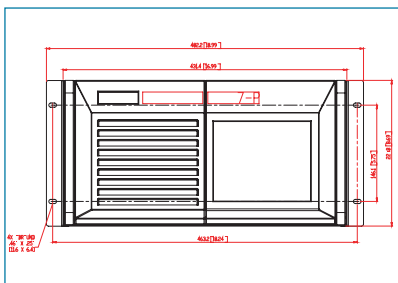
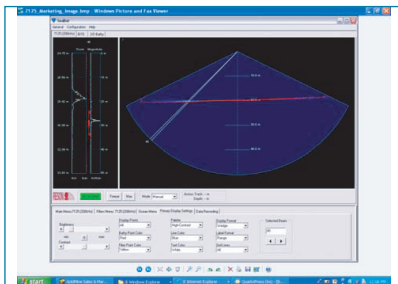
System Control:	7-P Processor Unit
Power Requirements:	110/220VAC 50/60Hz, 300W (Provided by sonar processor)
Data Transfer:	Ethernet, 1Gbit

MECHANICAL

Weight:	
Receive Array:	9.6kg (dry), 4.6kg (wet)
Transmit Array:	2.75kg (dry), 1.75kg (wet)
7-L LCU: 7-P Processor:	30kg
Dimensions:	
Receive Array:	102 x 496 x 131mm
Transmit Array:	62 x 285 x 62mm
Link Control Unit:	530 x 174mm
7-P Processor:	431.4 x 220.8 x 559.5mm
Temperature:	Operating: 0° to +40°C Storage: -30° to +55°C

OPTIONS

Beam Data Storage & High Speed Export (includes 1TB external RAID array)
Mounting Bracket with Fairing
Fiber-Optic Conversion for ROV Installations
SVP 70 Sound Velocity Profiler with 25m Cable
Automatic Mode Operation
Extended Warranty / Support & Maintenance Contracts
6000m Depth Rating
10m Array to LCU Cable Set



RESON reserves the right to change specifications without notice. © 2006 RESON A/S
For Acoustical Measurement Accuracy please refer to www.reson.com or contact sales.

RESON A/S
Denmark
Tel: +45 4738 0022
E-mail: reson@reson.dk

RESON Inc.
USA
Tel: +1 805 964-6260
E-mail: sales@reson.com

RESON OFFSHORE LTD.
Scotland, U.K.
Tel: +44 1224 709 900
E-mail: sales@reson.co.uk

RESON GmbH
Germany
Tel: +49 431 720 7180
E-mail: reson@reson-gmbh.de

RESON B.V.
The Netherlands
Tel: +31 (0)10 245 1500
E-mail: info@reson.nl

RESON Mediterranean SRL
Italy
Tel: +39-051-572-643
E-mail: info@reson.it

RESON-Telenav Electronics Pte. Ltd.
Singapore
Tel: +65-6-872-0836
E-mail: sales@reson.sg

RESON SA (PTY) LTD.
South Africa
Tel: +27 21 701-1720
E-mail: reson@reson.co.za