

HYDROGRAPHIC AND SIDE SCAN SONAR SURVEY FOR THE PASIR PANJANG TERMINAL RECLAMATION PROJECT

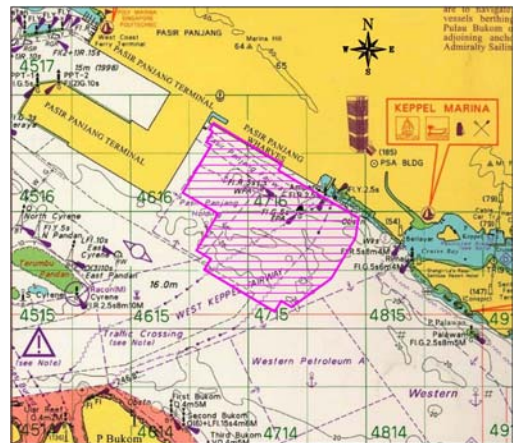
PROJECT OWNER



CLIENT



Geometra has been appointed as the survey contractor for interim surveys of the Pasir Panjang Terminal Reclamation project. Geometra was appointed by a consortium whose majority partner is Japan's Penta-Ocean Construction Co. The project is the development of 13 container berths at Phase II development of Pasir Panjang Terminal (PPT). The contracted value of the project is S\$1.92B (US\$1.27B) and the project is owned by PSA Singapore Terminals. The other partners in the joint venture are Koon Construction & Transport Co of Singapore, Hyundai Engineering & Construction Co of South Korea and Van Oord Dredging and Marine Contractors of Netherlands.



Geometra's scope of work in the above project, as per the project specifications, is to carry out bathymetric survey in the designated areas, using multi beam echo sounding and seabed features acquisition, using side scan sonar. Geometra was contracted to do three monthly interim hydrographic surveys and side scan sonar surveys in required locations during the reclamation work to recognize locations for pipelines, cable lines etc.

The survey is carried out in the field using the fully equipped survey vessel "Geometra Surveyors" which is crewed by qualified surveyors and engineers. The post processing, charting, plotting and final documentation work is to be done in the facilities of Geometra Head Office in Singapore.

