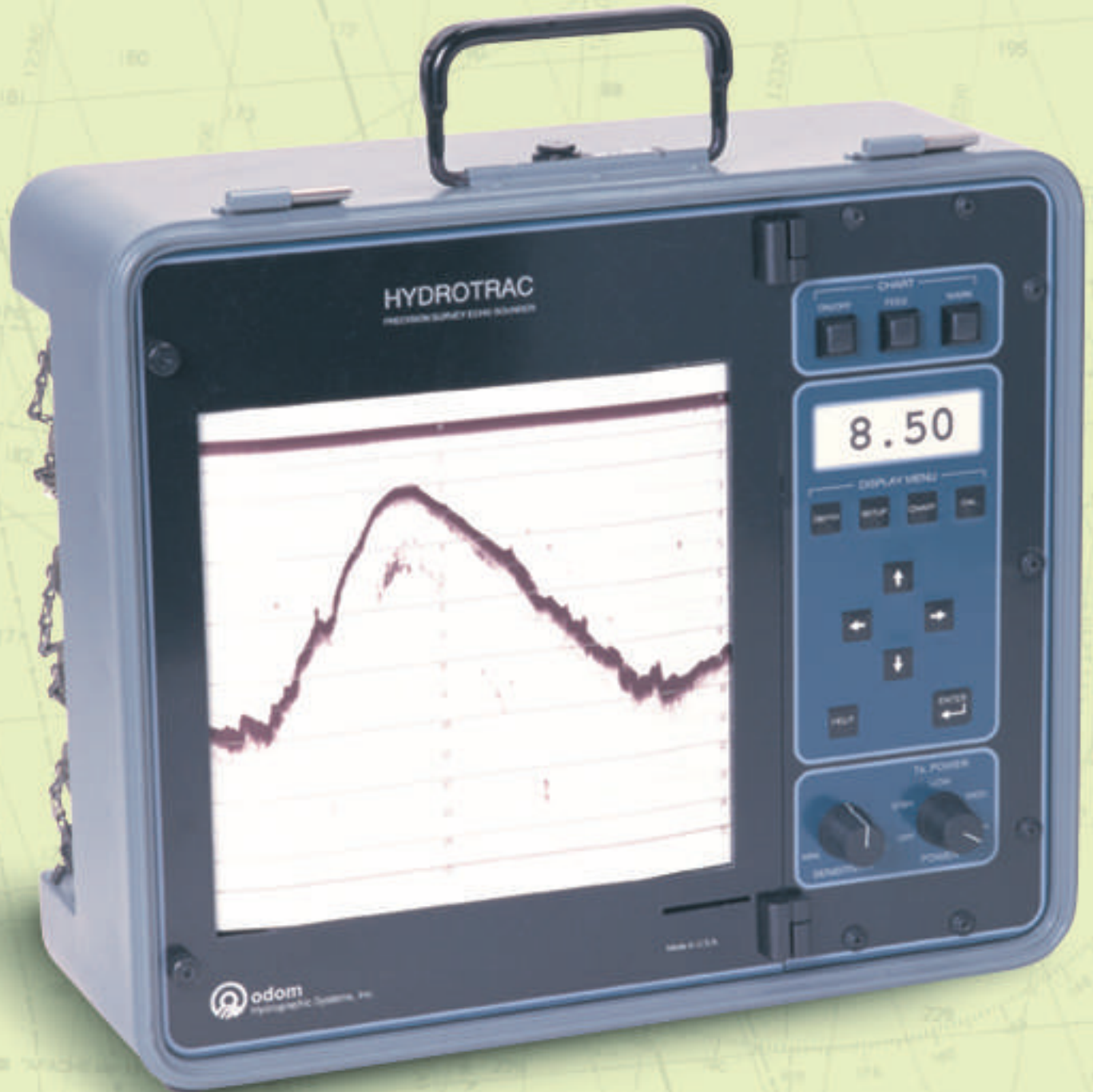


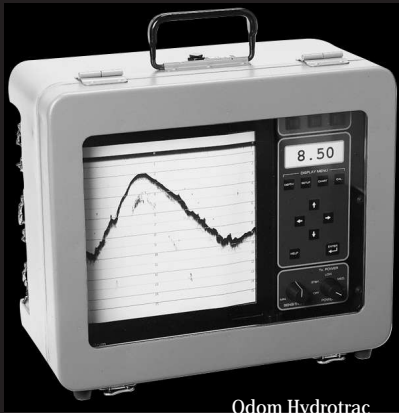
**odom**  
**Hydrotrac**<sup>TM</sup>

PORTABLE SURVEY  
ECHO SOUNDER



**AVAILABLE WITH  
BUILT-IN DGPS**





Odom Hydrotrac  
featuring full waterproof cover.

**odom**  
**Hydrotrac™** was specifically designed to work on small survey boats and inflatable water craft in rugged conditions such as surf zones. While being compact and portable, it is fully waterproof during operation. Hydrotrac incorporates the thermal printer and advanced features of odom's established echotrac line of echo sounders and is competitively priced.

## SPECIFICATIONS

### Frequency

- 200 kHz (standard)
- 210, 40 & 33 kHz (optional)

### Output Power

- 600 Watts

### Power Requirement

- 11-28 VDC (standard)
- 110/220 VAC (optional)

### Ports

- 2 (RS232 or RS422)

## FEATURES

- 8.5" / 216 mm Thermal Printer (fax paper)
- LCD Display (1" high)
- Sealed Keypad Controls
- Manual/Remote Mark Command
- Auto Scale Change (phasing)
- GPS Input
- Heave Input from Motion Sensor
- Annotation Printed on Chart
- Auto Pulse Length, AGC & TVG
- Output: NMEA, ECHOTRAC, DESO 25, etc.
- Waterproof
- Lightweight (24.8 lbs./ 11.25 kg.)
- Small Size (14.5 h x 16.5 w x 8.0 d inches)  
(36.83 h x 41.91 w x 20.32 d cm)
- Accuracy: 200 kHz-1cm±0.1% of depth value (corrected for sound velocity)  
33 kHz-10cm±0.1% of depth value (corrected for sound velocity)

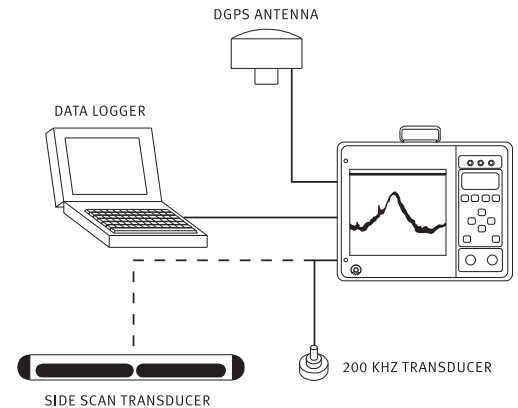
- Resolution: 0.1 ft./ .01 meters
- Fix Mark Print Date, Time, Fix No., Depth (and GPS position if input)
- Optional 200 kHz Side Scan Transducer
- Optional Built-in DGPS Beacon Receiver Including Combined Antenna
- Optional Left-Right Indicator
- Flash Memory Upgrade
- Built-in Simulator

## CONTROLS

- Sensitivity
- Chart On/Off & Advance
- Event Mark (internal selectable timer)
- Transmit Power (600/160/35 watts)

## TOUCH PAD SETTINGS

- Draft, Velocity & Tide Inputs
- Time & Date
- Scale Width & Center
- Blanking
- Calibration Gate
- Alarm Filter
- Fix Interval
- Chart Speed
- HELP Function (prints on chart)
- Current Parameters (prints on chart)



**GEOMETRA INTERNATIONAL (PRIVATE) LIMITED**  
LAND AND HYDROGRAPHIC SURVEYS

71 Ubi Crescent Tel : (65) 6743 7262  
#02-10 Excalibur Centre Fax : (65) 6746 1941  
Singapore 408571 Email : [geometra@pacific.net.sg](mailto:geometra@pacific.net.sg)  
RCB No.: 197800432Z Website : <http://www.geometra.com.sg>

SIKAS 1991  
BUREAU VERITAS  
Certification  
OHSAS 18001 : 2007

ISO 9001  
BUREAU VERITAS  
Certification  
UKAS  
ISO 9001 : 2000



**odom**  
HYDROGRAPHIC SYSTEMS

8178 GSRI Avenue Building B

Baton Rouge, Louisiana 70820-7405 USA

E-mail: [email@odomhydrographic.com](mailto:email@odomhydrographic.com)

<http://www.odomhydrographic.com>