

# 4100 SIDE SCAN SONAR SYSTEM



EdgeTech 272-TD Towfish

The *EdgeTech 4100 Side Scan Sonar System* is the long-lasting affordable workhorse of hydrographic surveying. The system comes standard with either a 19 inch rack mount or portable topside processor running EdgeTech's DISCOVER acquisition software along with a dual frequency 100/500 kHz towfish (model 272-TD).

With the portable 4100-P topside processor, the electronics are housed in a water resistant "suitcase-style" case and the sonar data is displayed on a supplied laptop via a wired [Ethernet] or wireless connection. The supplied laptops are the most current available on the market today and run in a Windows XP environment. The 4100 rack mount version offers the same specifications and operating system however in a standard 19 inch configuration.

The 4100 System can be custom tailored to specific requirements through EdgeTech software with such performance enhancing features as selectable operating frequency (100 kHz or 500 kHz), selectable color palettes, and display of towfish altitude.

The 272-TD towfish also comes standard with EdgeTech's patented Saf-T-Link® system which allows for safe recovery of the towfish if it becomes snagged on a seafloor obstruction.

*The long-lasting  
affordable  
workhorse of  
hydrographic  
surveying.*



EdgeTech Model 4100-P  
Portable Topside Processor

## Features:

- 2 channel side scan display
- NMEA 0183 navigation input
- Image correction
- Mosaic generation (optional)
- Target, capture, zoom, view, measure, store, and compare
- Selectable color palettes
- 25 to 500 meter swath

## Applications:

- Hydrographic surveys
- Channel clearance surveys
- Search and recovery
- Location of potential seafloor hazards
- Cable and pipeline surveys
- Mine counter measure surveys
- Site selection surveys, pre/post dredging surveys

# 4100 SIDE SCAN SONAR SYSTEM

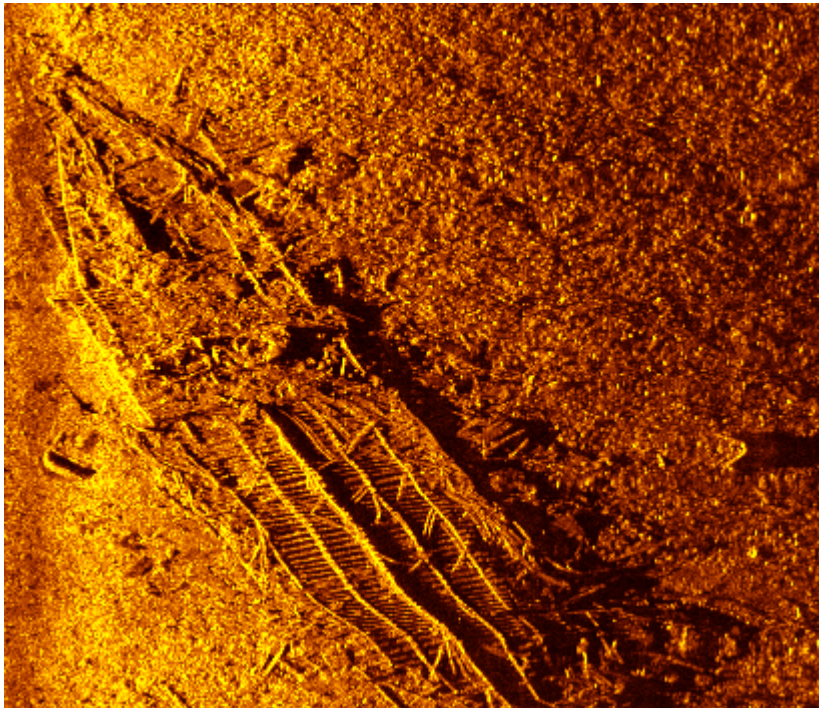


## Key Specifications

272-TD Towfish	
Frequency	100 kHz - 105 ± 10 kHz, 500* kHz - 390 ± 20 kHz
Horizontal Beam Width	100 kHz - 1.2° (3 dB points), 500* kHz - 0.5° (3 dB points)
Operating Range (maximum)	100 kHz - 500 meter swath, 500* kHz - 200 meter swath
Optimum Operating Depth	75-100 meters (depending on tow characteristics)
Tow Cable Type	7 conductor
Tow Fish Diameter	11.4 cm (4.5")
Tow Fish Length	140 cm (55")
Towing Speed (operational)	3 - 5 knots
Weight (in air)	25 kg (55 lbs)
Weight (in saltwater)	12 kg (26 lbs)

\*Note: Actual operating frequency is 390 kHz ± 20 kHz

Specifications subject to change without notice.



4100 image of flattened shipwreck



Model 4100 Rack Mount Topside Processor

**GEOMETRA INTERNATIONAL (PRIVATE) LIMITED**  
LAND AND HYDROGRAPHIC SURVEYS

71 Ubi Crescent Tel : (65) 6743 7262  
#02-10 Excalibur Centre Fax : (65) 6746 1941  
Singapore 408571 Email : [geometra@pacific.net.sg](mailto:geometra@pacific.net.sg)  
RCB No.: 197800432Z Website : <http://www.geometra.com.sg>



## Other EdgeTech Products

✓ Side Scan, Sub-bottom, Integrated and Modular Imaging Systems for Deep Towed, AUV, ROV and Other Applications utilizing Full Spectrum, MultiPing or Synthetic Aperture Acquisition and Processing Techniques.



E-MAIL: [INFO@EDGETECH.COM](mailto:INFO@EDGETECH.COM) WEB: [WWW.EDGETECH.COM](http://WWW.EDGETECH.COM)  
MA (USA) TEL (508) 291-0057 FL (USA) TEL (561) 995-7767